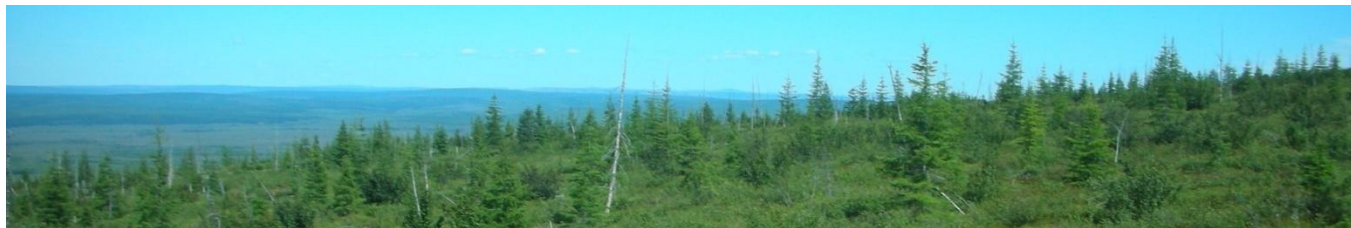




OVOCA GOLD Plc



CEO's message

Dear shareholders and news subscribers!

The recent news regarding the results from Olcha's Centralny Zone 2 is very significant and good news for the Company. The past work done on Olcha, prior to Ovoca's acquisition, was geared towards finding multiple mineralized veins in close proximity that would allow for bulk open-pit mining. And while the grade in many trenches and drill holes was encouraging, it was not possible to link together enough of the surface mineralization into an "open-pittable" resource. This year's drilling program is designed to chase ore zones along strike and at depth, which implies that a future mine at Olcha would most likely be primarily underground.

Right now we have a good sense of the potential grade at Olcha. As historical and 2010 drill results show, the grade is robust. The real question now is if we can establish

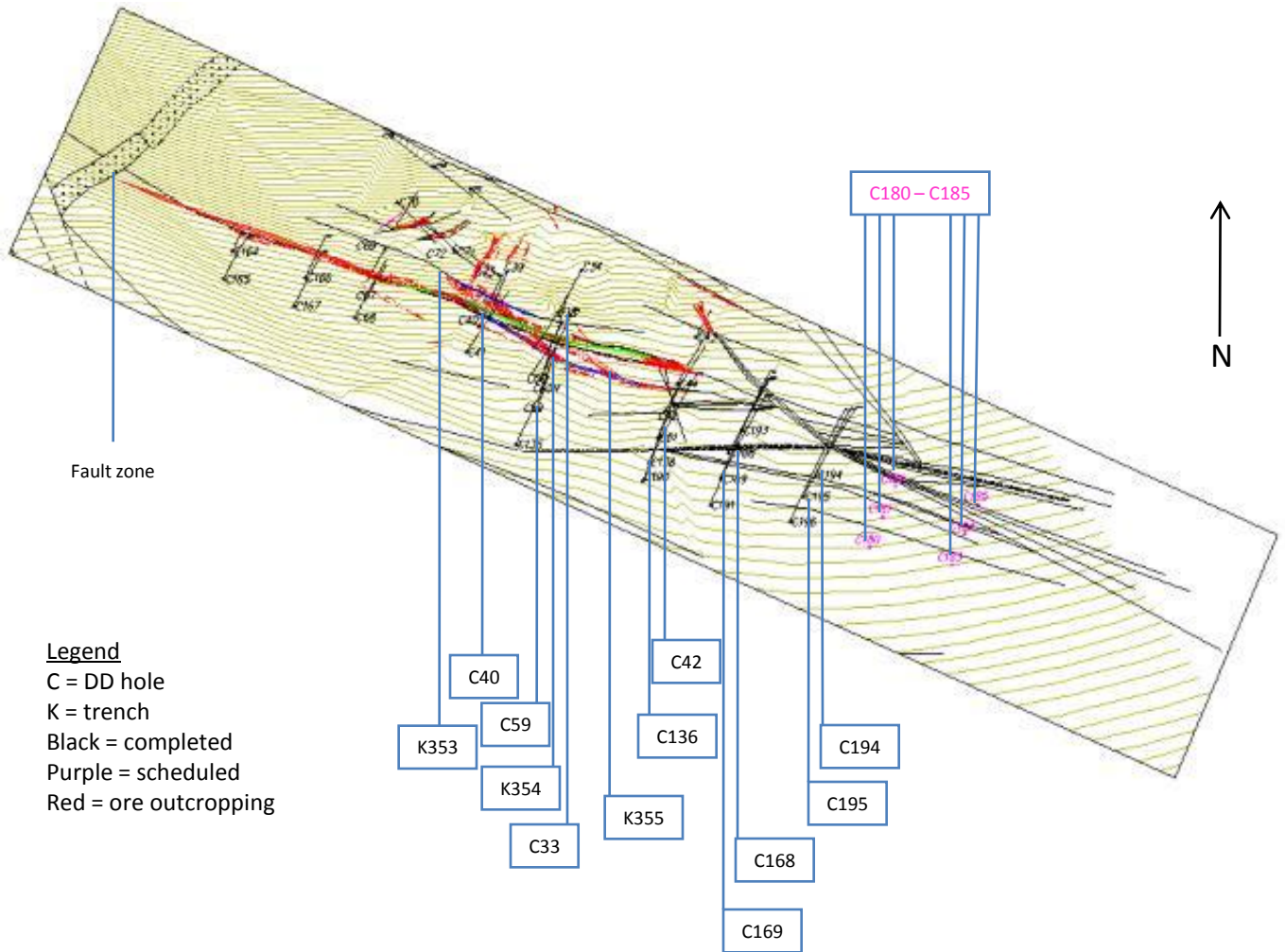
sufficient volume of metal as a resource so that there is enough value to go the next step of resource to reserve conversion and then feasibility study. For now the most progress has been made at Centralny Zone 2, and on that target the historic and 2010 drill and trench results include:

Bore hole ID number	Interval, m			Au grade g/ton	Ag grade g/ton
	from	to	length		
C-33	152.0	157.5	5.5	8.4	20.0
C-40	38.8	40.3	1.5	35.2	103.1
C-42	51.5	53.0	1.5	24.6	54.5
C-42	151.2	153.8	2.6	8.0	14.6
C-59	106.6	108.0	1.4	7.9	10.0
C-136	180.1	181.0	0.9	15.4	97.8
C-136	203.6	204.6	1.0	14.0	TR
C-168	95.9	110.0	14.1	11.3	30.1
<i>including</i>	105.2	110.0	4.8	30.9	70.6
C-168	168.6	171.6	4.0	5.4	37.0
<i>including</i>	169.6	170.6	1.0	15.2	110.4
C-169	197.5	207.5	10.0	14.6	13.0
<i>including</i>	197.5	199.3	1.8	14.1	10.3
<i>including</i>	204.8	206.5	1.7	44.5	40.8
C-190	195.1	202.6	6.5	6.5	28.1
<i>including</i>	199.1	200.9	1.8	19.2	68.8
C-194	144.7	146.7	2.0	10.4	29.5
C-195	259.9	273.6	13.7	4.0	16.5
<i>including</i>	266.4	268.0	1.6	9.7	49.9
<i>including</i>	270.8	271.6	0.8	13.6	20.8
Trench ID number					
K353			1.5	18.5	30.5
K354			9.4	10.7	89.7
K355			3.5	14.3	16.8

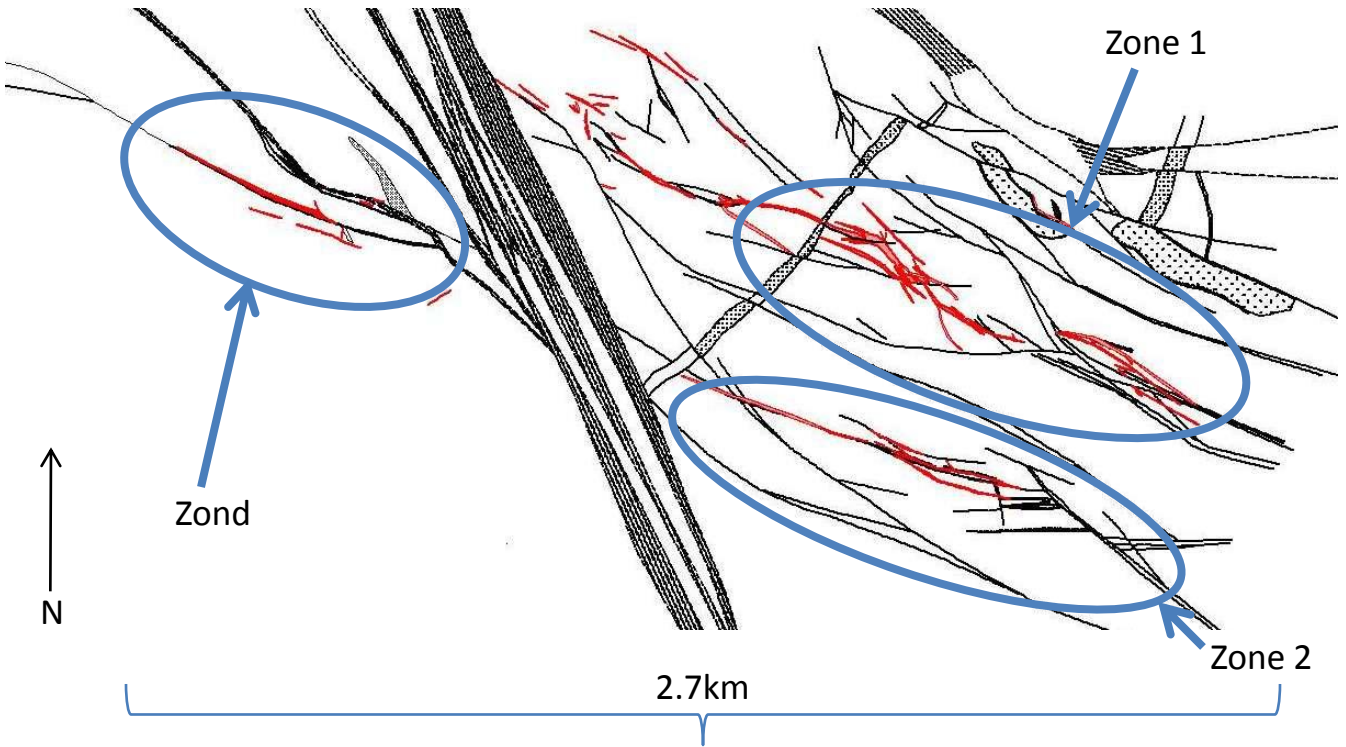
We have been drilling profiles of 3 – 4 holes at 100 meter intervals across strike along the established overall strike line that extends to the southeast. The fault zone to the northwest is currently being explored to determine the make-up of Zone 2 in that direction. The historic drill work and 31 August 2010 announced results demonstrate there is an ore shoot that outcrops in the area from trench K353 to K355 and then plunges underground to the southeast. We plan to drill further profiles to try to catch this ore shoot as far along strike as possible.

Ovoca has also been drilling profiles of holes across strike in Centralny Zone 1. The Company is also drilling to the east and west of trench K370 on Zond, which showed 9.2m @ Au 45.6 g/t, Ag 102.5 g/t. The full results of these profiles are not yet available.

Map of Centralny Zone 2, top down image, strike in image = 1.5km



Map of Olcha, including Centralny Zone 1 and 2, Zond



Picture of Centralny Zone 1 and 2 (drill rig in center)

